

**MBI**

MASSACHUSETTS  
BROADBAND INSTITUTE



at the MassTech  
Collaborative

# Cape & Islands Region Massachusetts Broadband and Digital Equity Listening Session

September 2023

# Agenda

---

Welcome!

Introducing MBI

Statewide Planning Process

Digital Equity and Broadband in the Cape & Islands

Breakout Sessions

Thank You & Closing

# Meeting Ground Rules



Be **fully present** by not checking your phone or computer

Know when to lead versus **creating space for others to speak**

**Be open** and listen to others. Even when you disagree, suspend judgment, and look for common ground.

Recognize that **we are all approaching this process with different levels of understanding and lived experiences** surrounding equity and digital equity.



**01**

# Introducing MBI

# About the Massachusetts Broadband Institute



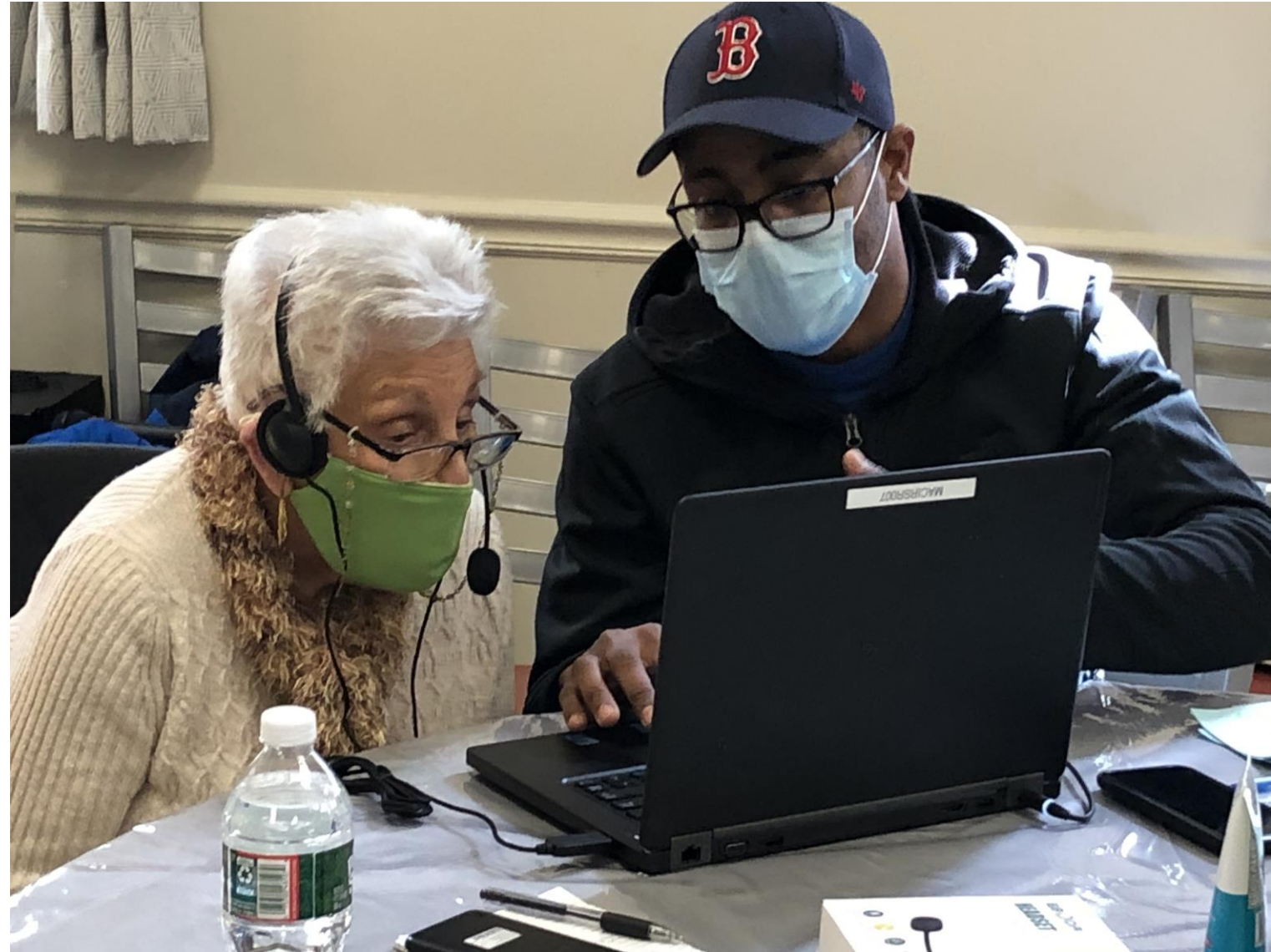
***MBI's mission** is to make affordable high-speed Internet available to all homes, businesses, schools, libraries, medical facilities, government offices, and other public places across the Commonwealth. MBI works closely with key stakeholders to bridge the digital divide in Massachusetts.*

## Investments: Vinfen

Through a regional network of Human Services providers, Vinfen will support the deployment of 15 regionally based Technology Navigators who will support 4,000 people with disabilities to obtain devices, learn how to use them and enroll in the Affordable Connectivity Program (ACP).

### How to get involved?

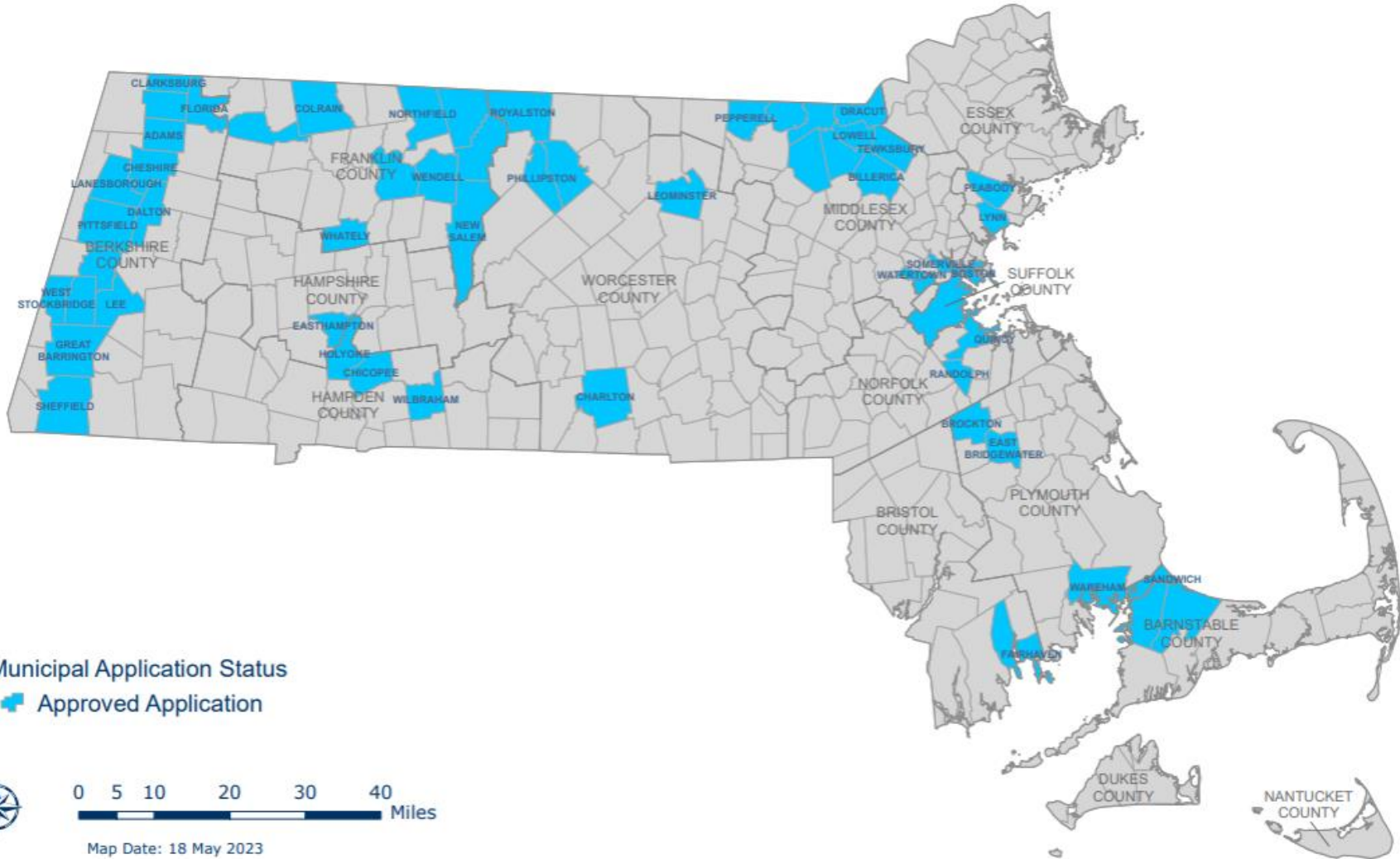
Connect with Vinfen!  
Jessie Wolfe, [wolfej@vinfen.org](mailto:wolfej@vinfen.org)



# MBI's Digital Equity Programs and Partnerships

## Cape & Islands Participants

Sandwich  
Bourne  
Orleans



**MBI**

MASSACHUSETTS  
BROADBAND INSTITUTE



at the MassTech  
Collaborative

## Massachusetts Broadband & Digital Equity Funding

**\$75M** - State ARPA Digital Equity  
Fund

**\$175M** - US Treasury Capital Projects  
Fund

**\$1M** - NTIA Digital Equity Act  
Planning Grant

**\$147M** - NTIA Broadband Equity,  
Access,  
and Deployment Grant (including  
\$5M Planning Grant)





# Ellen Sharpe

*Director of Tribal  
Employment Rights,  
Mashpee Wampanoag Tribe*



**02**

# Statewide Planning Process

# State Broadband and Digital Equity Planning

*The State Digital Equity Plan will include...*

- Vision and input gathered from communities across the state in the planning process
- Community-identified barriers to digital equity
- An assessment of what's working to advance digital equity
- Strategies to build on existing data, reports, and plans



# How you can further shape the plan!



## Contribute to Asset Mapping Database

Fill out Asset Mapping form with relevant assets including programs, organizations, reports, engagement activities



## Take our Public Survey

Send to your friends and family!

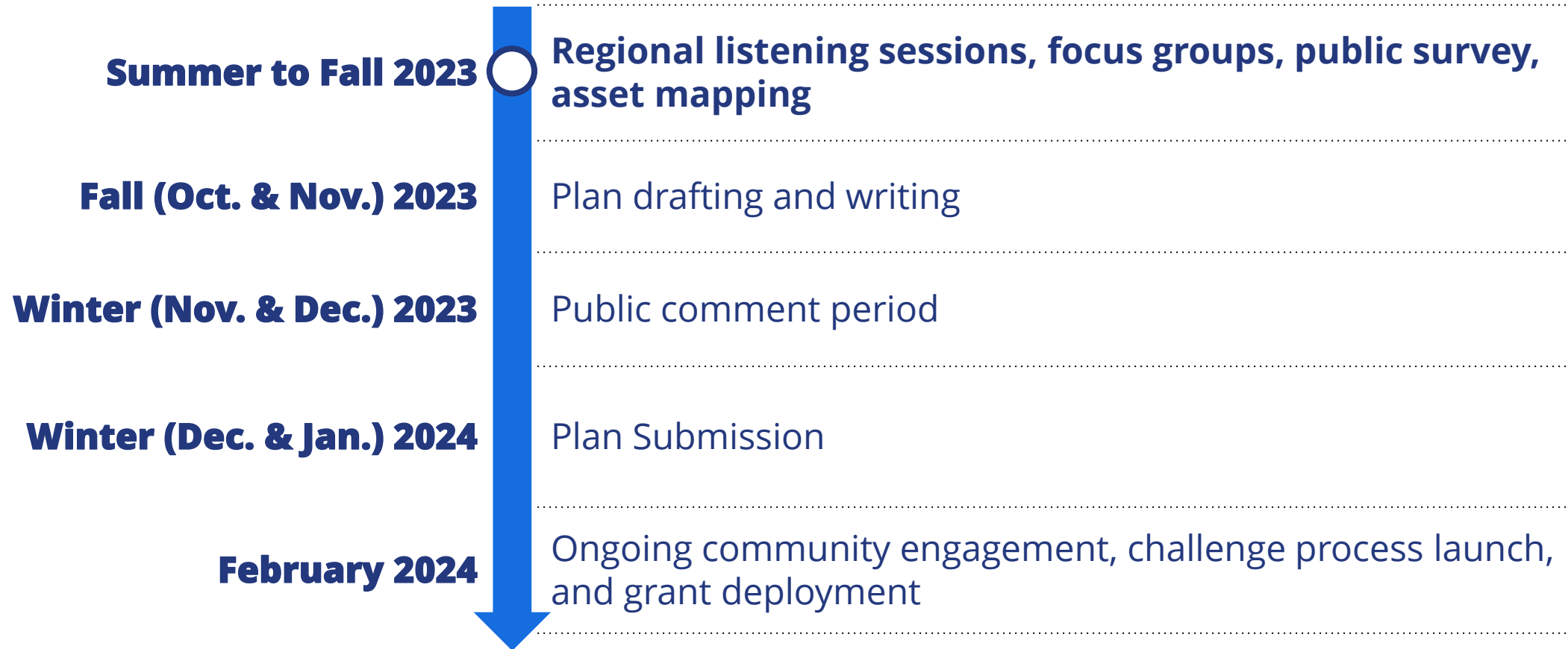


## Promote a Listening Session

Tell your networks about the regional listening sessions!

**Boston 9/30**  
**Greenfield 10/3**

# Timeline



→ Visit [broadband.masstech.org](https://broadband.masstech.org) for upcoming events and ways to get involved.

A background network diagram consisting of numerous blue nodes connected by thin lines, forming a complex web-like structure. The nodes are of varying sizes and are distributed across the entire frame. The overall color scheme is dark blue with lighter blue highlights for the network elements.

**03**

# Existing Conditions



**Digital equity** is a condition in which all individuals and communities have the information technology capacity needed for full participation in our society, democracy, and economy. Digital equity is necessary for civic and cultural participation, employment, lifelong learning, and access to essential services.

– National Digital Inclusion Alliance

# Determining Factors of Digital Access



**Connection**

**Fast  
Affordable**



**Adequate Device**

**Router  
Personal Computer /Laptop**



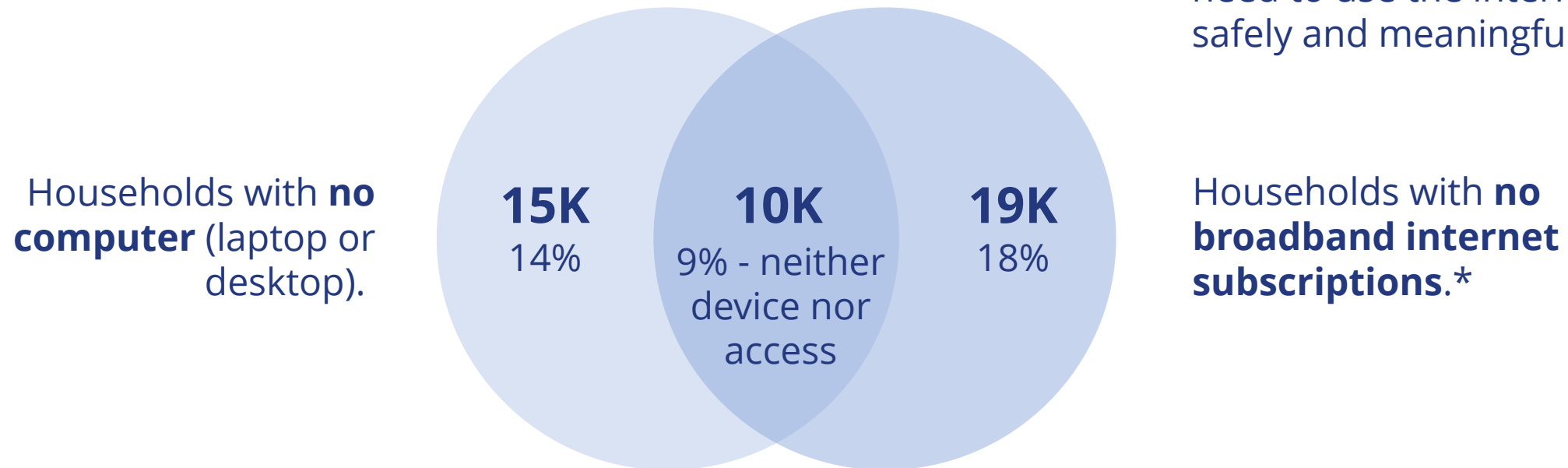
**Literacy**

**Use of Technology  
Ensuring functioning equipment  
Evaluating quality of information and privacy risks**



# Digital Gaps in the Cape & Islands

Of **109,000 households** in the region...

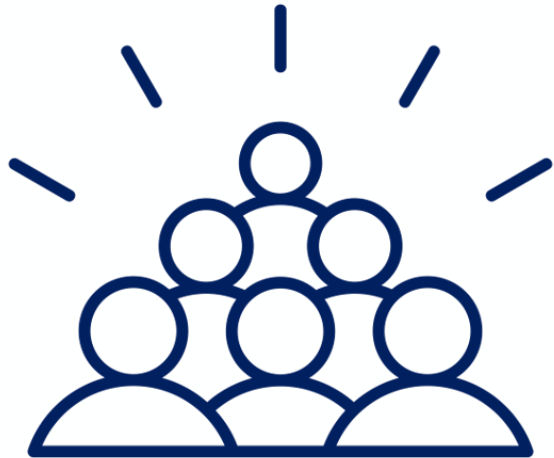


**Many more** face challenges with finding the support they need to use the internet safely and meaningfully.

These challenges have **disproportionate impact for specific population groups** depending on a range of socioeconomic, historical, and geographic factors.

\* Residents with no broadband access (cable, fiber optic, or DSL) in their household. **Source:** U.S. Census Bureau

# Statewide Survey - Preliminary Findings



## Total Responses x Region

Region	Responses	Target
Connecticut River Valley	821	307
Greater Boston Region	1,091	1,085
Cape Cod & Islands Region	828	112
Southeast Region	1,101	608
Northeast Region	1,034	455
Central Mass Region	175	378
Berkshire Region	918	55
Unknown	62	-
<b>Total</b>	<b>6,030</b>	<b>3,000</b>

## Covered Population Responses in Cape Cod & Islands

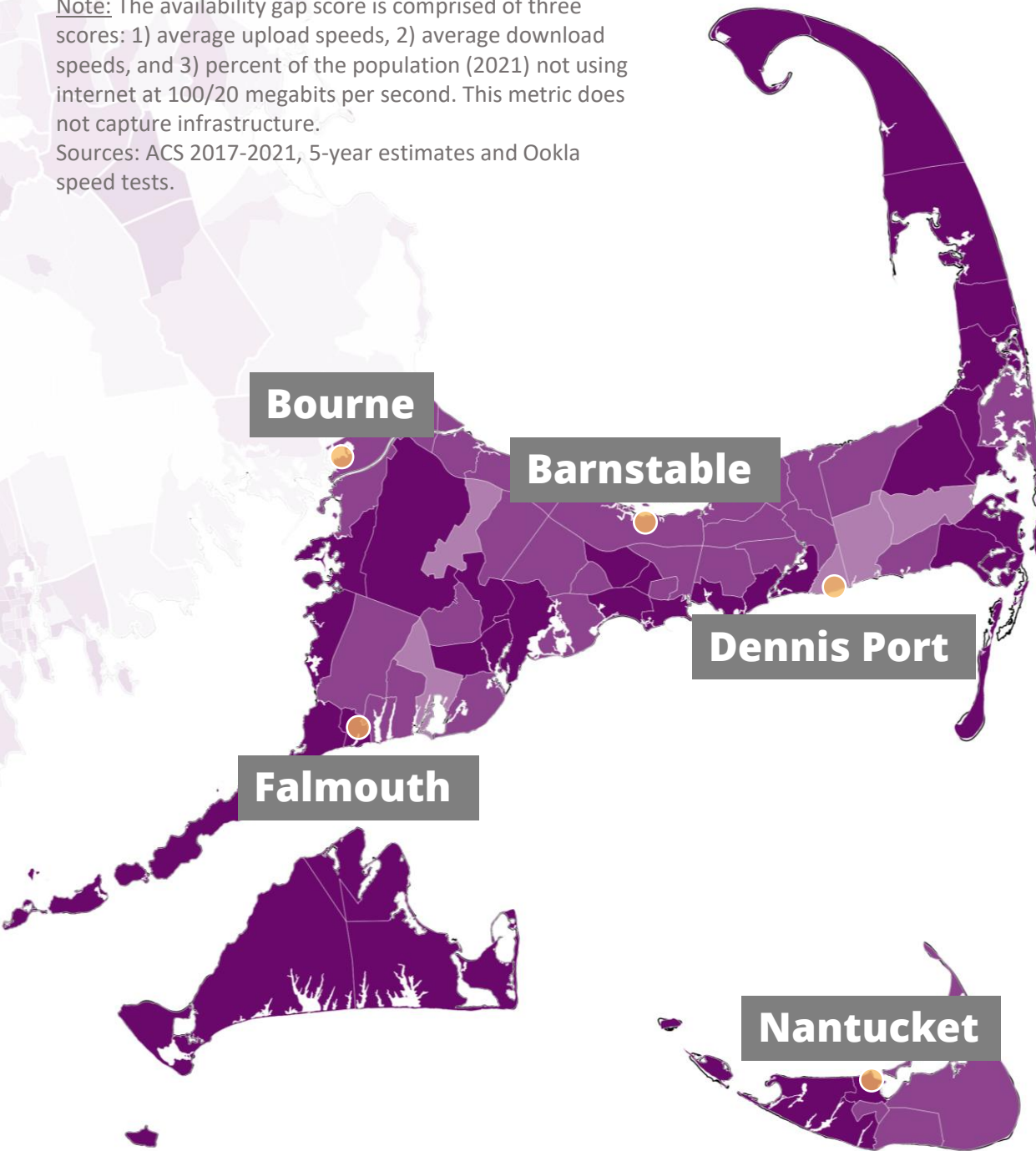
Covered Population	Responses	Target
Aging Individuals	480	43
Veterans	61	7
People of Color	209	14
Households with Limited English**	0	1
Individuals with Disabilities	78	15
Low-Income Households	43	13
Residents in Rural Areas	230	31

\*Response numbers are updated as of Wednesday, 9/13, 12pm.

\*\* This is an estimate based on the number of non-English surveys submitted.

**Note:** The availability gap score is comprised of three scores: 1) average upload speeds, 2) average download speeds, and 3) percent of the population (2021) not using internet at 100/20 megabits per second. This metric does not capture infrastructure.

Sources: ACS 2017-2021, 5-year estimates and Ookla speed tests.



## Access and Quality of Service

**26%** of statewide survey respondents reported that their internet service is not good enough to meet their household's needs.

**95%** of municipalities in the Cape Cod & Islands region have little or no competition in the broadband market.

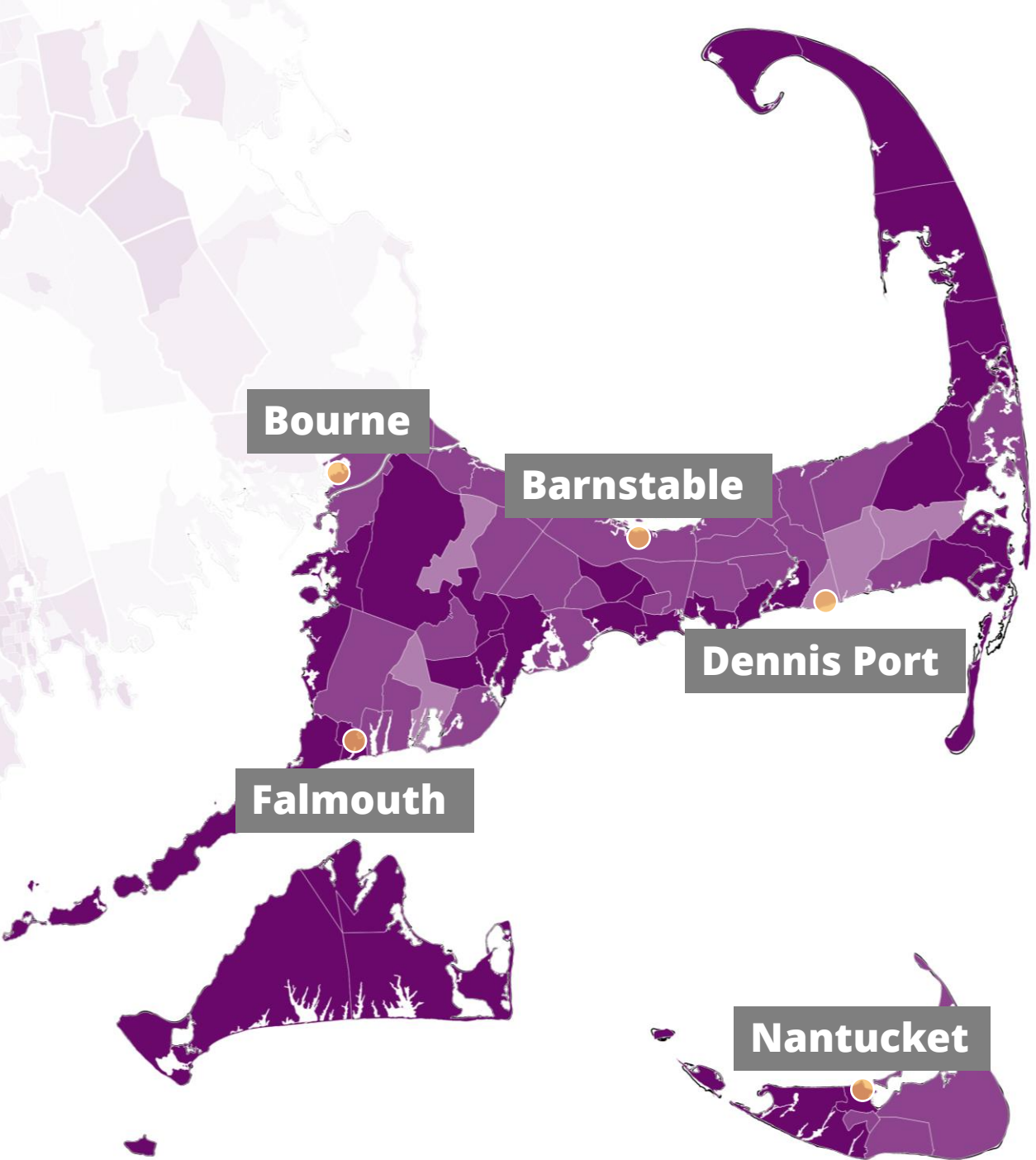
### Legend

The availability gap score ranges in value from 0 to 100, where 100 indicates the highest gap in availability.



# Access and Quality of Service

In the Cape Cod & Islands region, there are **~1,670 Unserved or Underserved** locations.

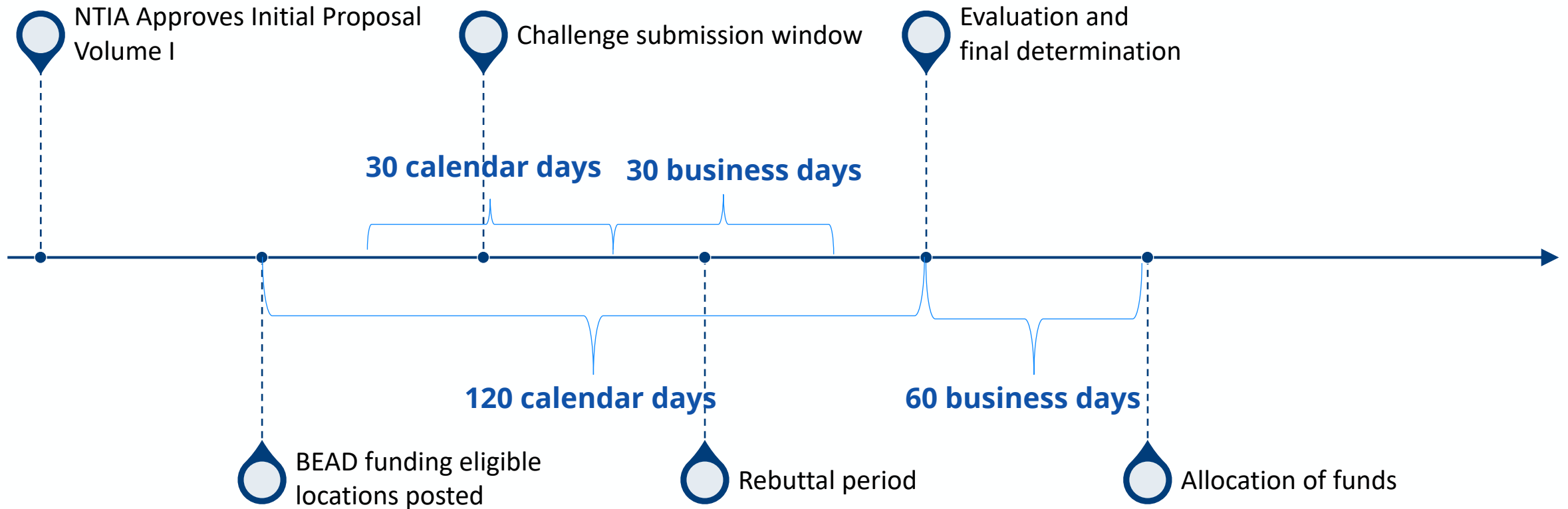


Top 5 Municipalities – Unserved Locations	
Edgartown	247
Gosnold	188
Nantucket	143
West Tisbury	99
Barnstable	82

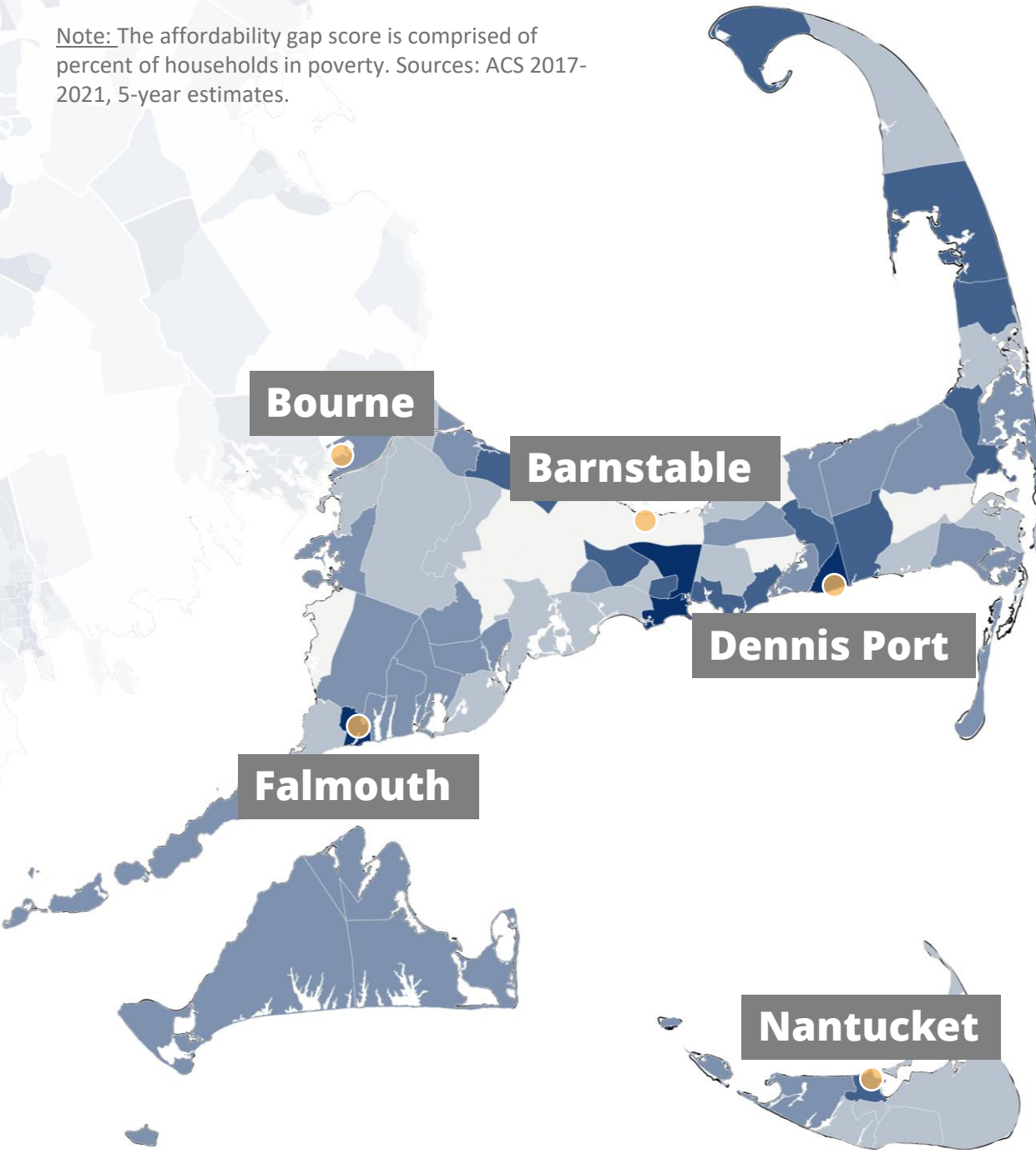
Top Municipality– Underserved Locations	
Bourne	101

Source: Federal Communications Commission, Broadband Data Collection (2022)

# Challenge Process



Note: The affordability gap score is comprised of percent of households in poverty. Sources: ACS 2017-2021, 5-year estimates.



# Affordability Gap

Over **1 in 3** survey respondents statewide reported having at least some difficulty paying for their internet.

The average for the lowest broadband price regionwide is **\$79.50**.

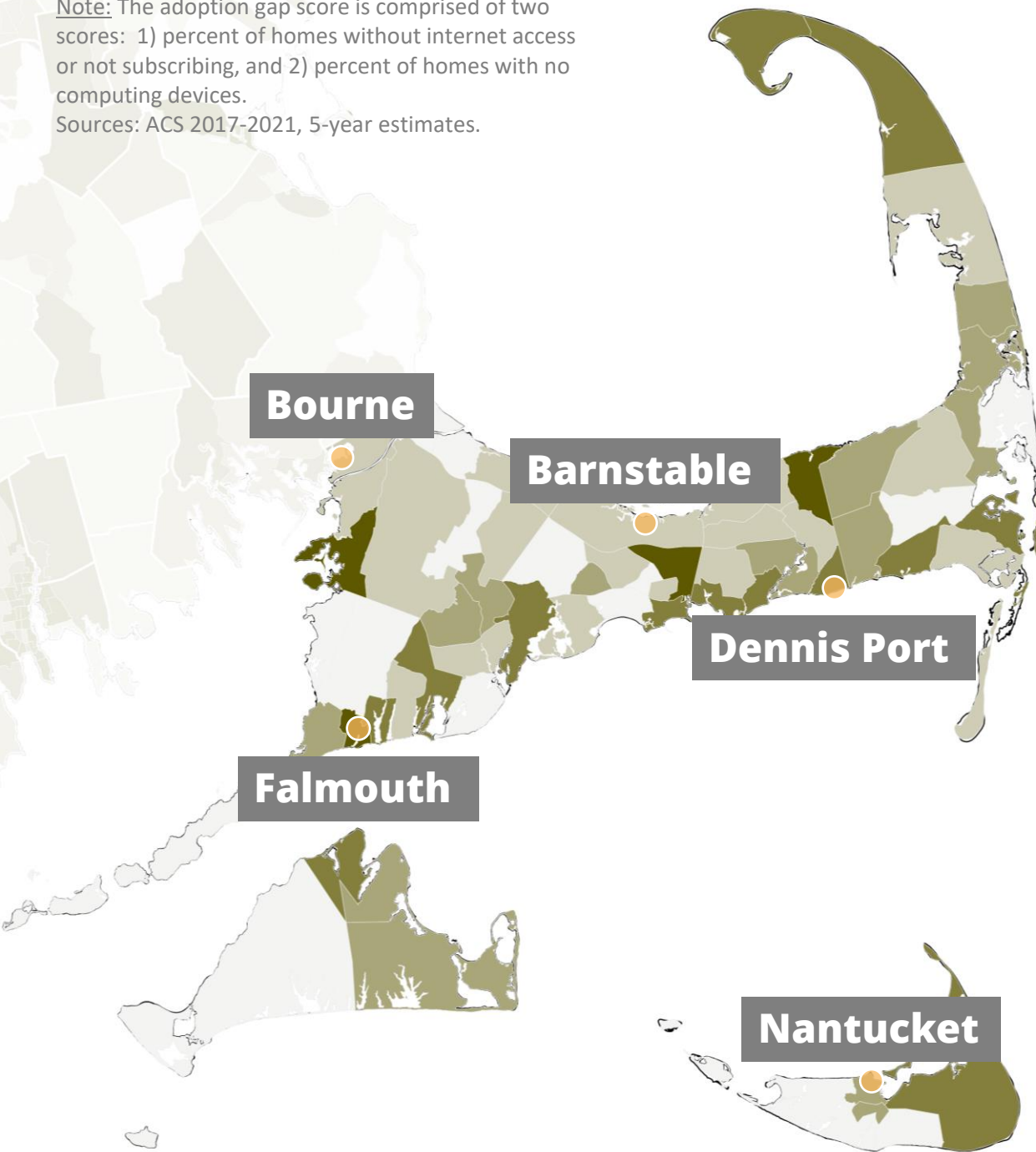
## Legend

The affordability gap score ranges in value from 0 to 100, where 100 indicates the highest gap in affordability.



**Note:** The adoption gap score is comprised of two scores: 1) percent of homes without internet access or not subscribing, and 2) percent of homes with no computing devices.

Sources: ACS 2017-2021, 5-year estimates.



## Adoption Gap

In the Cape Cod & Islands region, adoption gaps are highest in towns such as Barnstable and North Falmouth.

Statewide, **nearly half** of survey respondents without internet at home cite cost as a prohibiting factor.

### Legend

The adoption gap score ranges in value from 0 to 100, where 100 indicates the highest gap in adoption.



# Community Anchor Institutions



**Education Institutions**



**Community Centers**



**Libraries**



**Museums and Cultural  
and Religious Centers**



**Healthcare  
Infrastructure**



**Public Housing**



# Assets in the Cape & Islands Region

MBI is collecting unique assets that contribute to digital equity in each region.

87

*Digital equity  
assets submitted to  
date for the region*

Example Assets:



## **Elder Services of Cape Cod & Islands: Senior Planet Courses -**

Free computer classes covering computer basics, protecting privacy online, intermediate classes, and computer essentials.



## **Cape Cod Community College**

**Adult ESOL** - Digital literacy support interwoven throughout curriculum to support students through their learning journey.

# Broadband & Digital Equity Planning Update

---

**STEVEN TUPPER**, DEPUTY DIRECTOR  
CAPE COD COMMISSION

SEPTEMBER 28, 2023



CAPE COD  
COMMISSION

# Broadband and Digital Equity Planning Activities



---

**Cape Cod  
Context**



---

**Regional  
Broadband Needs  
Assessment**



---

**Asset Mapping  
Highlights**

# Broadband and Digital Equity Activities



---

Cape Cod  
Context



---

Regional  
Broadband Needs  
Assessment



---

Asset Mapping  
Highlights

# Regional Broadband Needs Assessment

## Process overview

July '23

1

Assessment of existing conditions of fixed and mobile broadband networks and service availability

2

Data collection: statistically valid survey, provider engagement, speed tests, focus groups

3

Identification of infrastructure gaps and barriers to access (includes affordability/skills/devices)

4

Recommendations for addressing gaps identified through the process

5

Coordination with Commission-led/ MBI-funded equity planning and implementation efforts

6

Public presentations

### Project will deliver:

- Assessment, which is foundational to building long-term strategies
- Documentation of service availability and quality, and of gaps to access
- Recommendations on policy and program options to improve connectivity and access

June '24

---

# Regional Broadband Needs Assessment

## Progress & Project Highlights

- Reviewed existing conditions data, including federal, state, and local data sources.
- Statistically valid phone survey of 700 participants concluded, covering:
  - Service, availability, reliability and speed at specific locations.
  - Costs, data caps, and overage fees.
  - Online activities of internet users and frequency of broadband use.
  - Satisfaction with service and perception of ISP.
  - Interest in alternative services and providers.
  - Barriers to adoption (digital equity considerations).
  - Seasonal usage.
- Speed testing ongoing: public speed tests and regular speed monitoring (conducted by staff and volunteers).
- Up next: engagement with providers (Comcast, OpenCape, mobile) and focus groups with key populations.

# Regional Broadband Needs Assessment

Preliminary Ookla speed  
test data analysis:

**Fixed download speeds in  
Barnstable County were  
60% lower in Q3 (summer)  
than in Q4 (off-season).**

## Average fixed download speeds (Mbps) in Q3 and Q4 of 2022

*By Census block*

July - September

October - December



Source: Ookla (2022)

Notes: Outliers have been removed from the Ookla tiles, and remaining tiles were aggregated to the Census block-level. Only Census blocks with tests in both quarters are featured in the figure. Blocks exceeding 200 Mbps are represented in black (these blocks range from 201 to 636 Mbps). Areas in blue are large bodies of water and the area in green is Camp Edward. The average download speed in Barnstable County was 25 Mbps in Q3 and 40 Mbps in Q4.

# Broadband and Digital Equity Activities



---

Cape Cod  
Context



---

Regional  
Broadband Needs  
Assessment



---

Asset Mapping  
Highlights



---

# Asset Mapping Highlights

## Key Takeaways for Cape Cod

- **Library** services often include: access to devices and wi-fi on-site, hotspot and device lending, and digital literacy support through library staff.
- **Councils on Aging** across the region are partnering with **Elder Services of Cape Cod & the Islands** to offer digital literacy courses. Other services include: individualized programs to walk seniors through specific tech questions, group courses that incorporate elements of digital equity, and 1-on-1 support.
- **Health and human services** agencies frequently embed elements of digital equity within programs designed to achieve broader goals.

# Broadband & Digital Equity Planning

[www.capecodcommission.org/broadband](http://www.capecodcommission.org/broadband)

---

**STEVEN TUPPER**, DEPUTY DIRECTOR  
stupper@capecodcommission.org

SEPTEMBER 28, 2023



CAPE COD  
COMMISSION



03

# Breakout Discussions

## Remember the Ground Rules



Be **fully present** by not checking your phone or computer

Know when to lead versus **creating space for others to speak**

**Be open** and listen to others. Even when you disagree, suspend judgment, and look for common ground.

Recognize that **we are all approaching this process with different levels of understanding** surrounding equity and digital equity.

**Respect confidentiality.** What is discussed in this room stays in this room.

# Breakout Rooms

We look forward to hearing from you on the topics below.

## Virtual Breakout Rooms:

Please follow this [jam board link](#):

XX

## In Person:

Staff will assign breakout group participation

## Visioning Exercise

Thank you for your participation in breakout discussions. We would like to move into a visioning exercise to close out today's activity.

### What does Internet for All mean to you?

Imagine it's five years in the future. The Digital Equity Plan has been a resounding success. After some initial challenges, Massachusetts's solutions are having a huge impact on the world in ways you'd never even imagined!

- Take 1 minute to scan the QR code to the right and use one word to answer the question above.





**04**

# Closing Session

## Report back

Thank you for your participation in our facilitated discussion. We want to learn more about what you heard and discussed.

What was  
discussed in  
your breakout  
room?



# Timeline



→ Visit [broadband.masstech.org](https://broadband.masstech.org) for details on events and ways to get involved.

# Thank you!

Contact MBI at

[broadband@masstech.org](mailto:broadband@masstech.org)

Visit the **Internet for All Page**

[broadband.masstech.org/internetforall](http://broadband.masstech.org/internetforall)